



# GAT MONTHLY MEMBERSHIP PROGRESS REPORT

Results as of: 5/31/2024

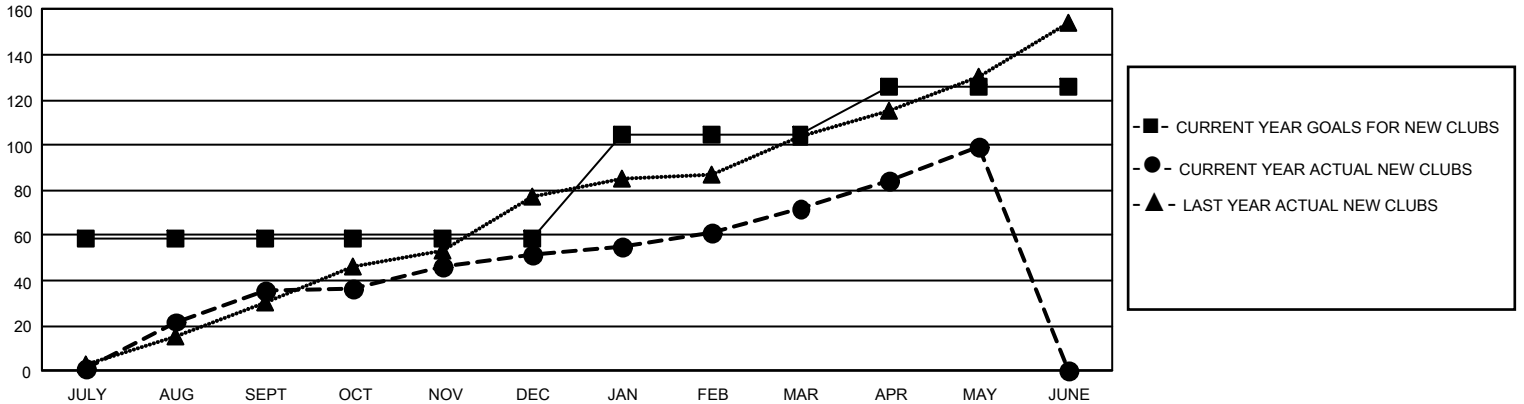
## GMT Constitutional Area 6 - S, Group A

REPORT DOES NOT INCLUDE CLUBS IN UNDISTRICTED AREAS.

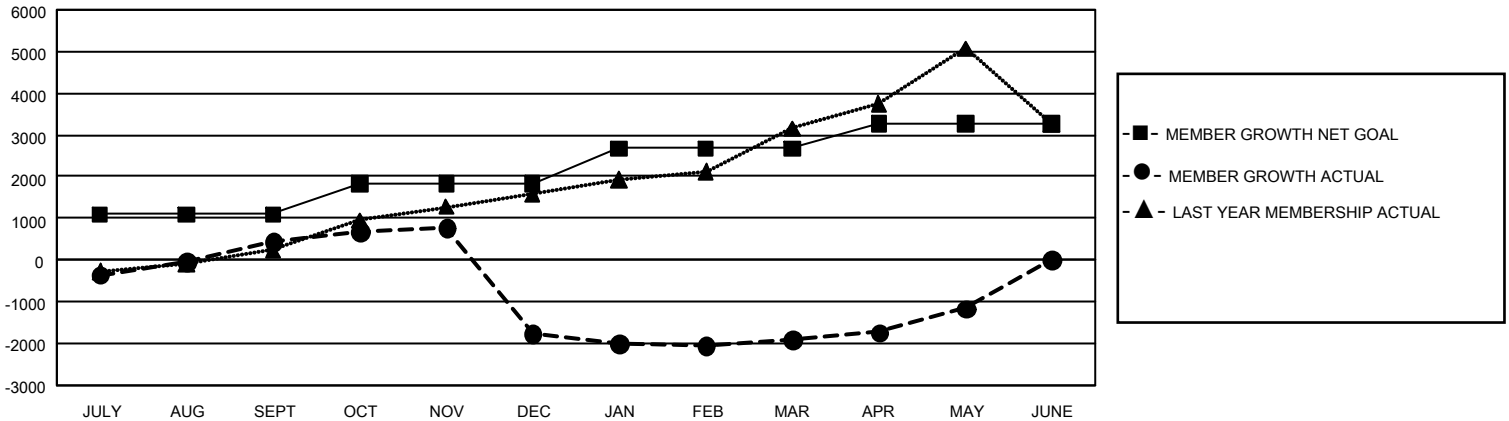
Clubs			
RESULTS FOR 2023-2024			
QUARTER	NEW CLUB GOAL	NEW CLUBS	DROPPED CLUBS
JULY/AUG/SEPT	177	36	2
OCT/NOV/DEC	0	16	50
JAN/FEB/MAR	138	20	31
APR/MAY/JUNE	63	27	12

Members			
RESULTS FOR 2023-2024			
QUARTER	MEMBER GROWTH NET GOAL	MEMBER GROWTH ACTUAL	DROPPED MEMBERS ACTUAL (including transfers)
JULY/AUG/SEPT	1099	2,160	1,361
OCT/NOV/DEC	720	1,941	3,768
JAN/FEB/MAR	858	2,057	1,869
APR/MAY/JUNE	598	2,253	1,079

GOALS AND ACTUAL NEW CLUBS CUMULATIVE



GOALS AND ACTUAL MEMBERS CUMULATIVE



<b>DROPPED CLUBS: 95</b>	874 CLUBS OF 1,563 ADDED 1 OR MORE NEW MEMBERS	<b>GENDER DISTRIBUTION</b>	
		MALE 30,809 (75.53%) FEMALE 9,974 (24.45%) NON BINARY 0 (0.00%) PREFER NOT TO ANSWER 8 (0.02%)	
<b>DROPPED MEMBERS</b>		<a href="#">CLICK HERE FOR CUMULATIVE MEMBERSHIP DATA</a>	TOTAL FAMILY UNIT MEMBERS 13,832
DECEASED 68 CLUB CANCELLED 2,177 OTHER 5,829 <b>TOTAL 8,074</b>	FAMILY MEMBERS PAYING HALF DUES 8,808		